

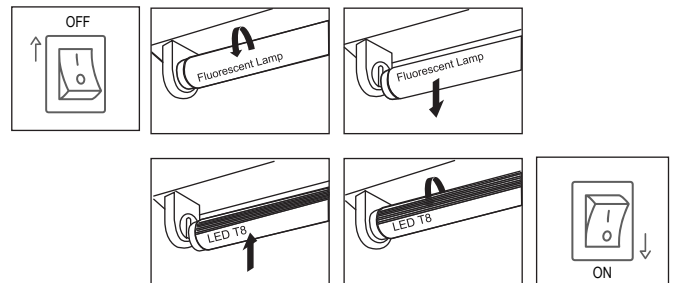
## IMPORTANT SAFEGUARDS

### SAFETY PRECAUTIONS

- WARNING - Risk of Shock: Disconnect power before installation.
- WARNING - Risk of Fire: Use only in place of fluorescent lamps specified on label.
- LED T8 lamp for use only with products described and installed in accordance with product specifications. LED T8 lamp to be operated with qualified T8 fluorescent electronic ballast; check ballast compatibility list before installation.
- This tube should only be installed by a licensed electrician.
- This tube should be used indoors (damp or dry locations only). Not suitable for wet locations.
- Make sure that tombstones/lampholders are still in good condition and not defective before installation.
- Put LED tubes/G13 pins into the right position of the socket and install properly.

### INSTALLATION

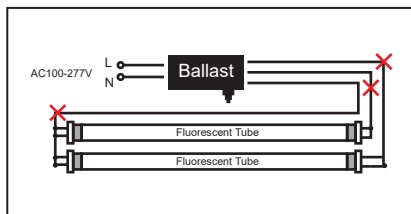
1. Make sure power is OFF.
2. Remove lens or diffuser (if applicable).
3. Remove existing fluorescent lamps from the luminaire.
4. Bring LED lamp to luminaire and insert lamp pins into luminaire lampholders.
5. Rotate LED lamp until lamp locks in place. Ensure that the LED lamp front points away from the back of the luminaire.
6. Note: Install one LED T8 replacement lamp for each fluorescent lamp removed.
7. Place lens or diffuser back in place (if applicable).
8. Power On.



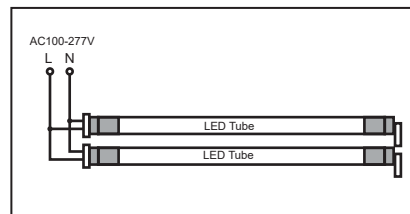
### Wiring Diagram:

#### (Type B)

#### Before



#### After



#### Dimming UL Type B

